

## SDG X Series IVI Specific Driver Installation Guide

### Running Environment

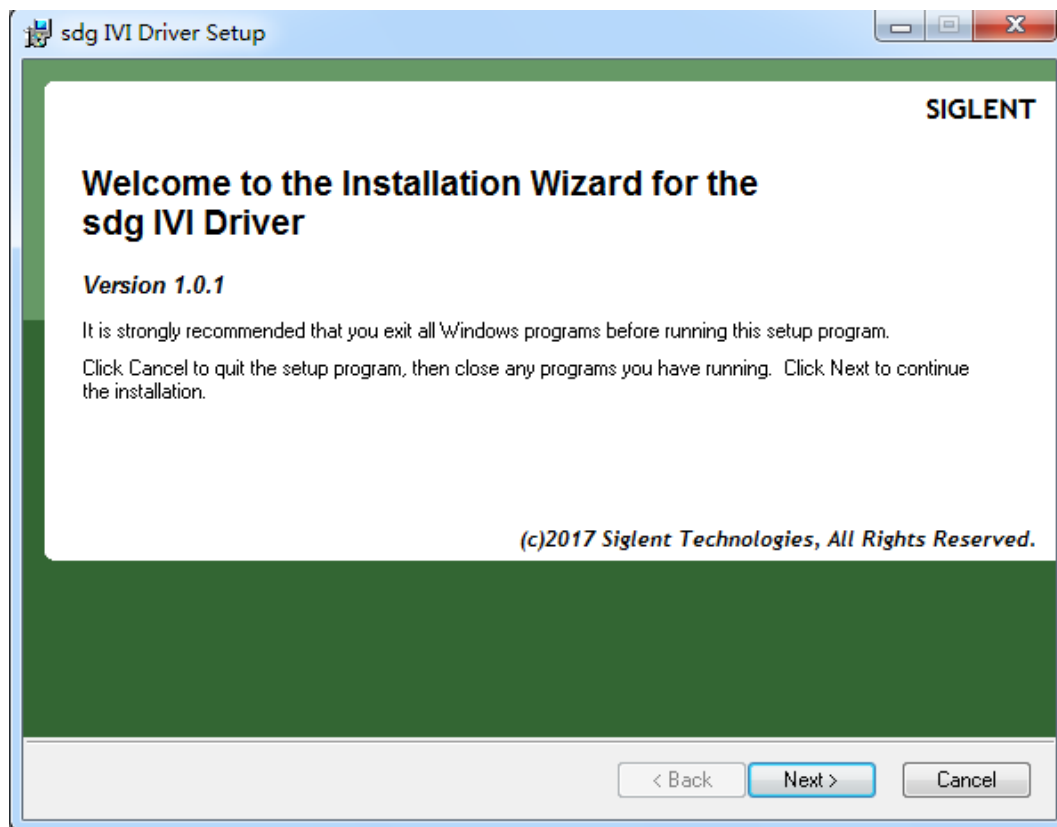
- Operating System: Windows XP, Windows 7
- IVI Compliance Package 4.5 or higher

### Install IVI Compliance Package

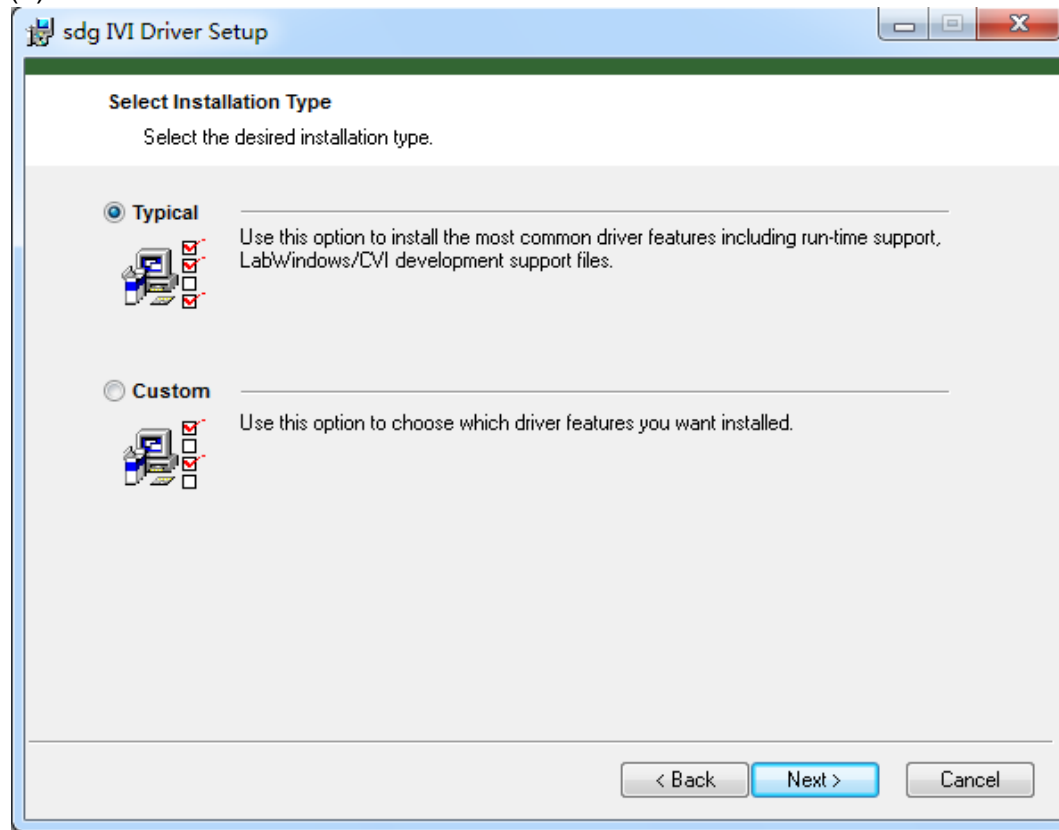
Before installing the IVI Specific Driver, please make sure that your PC has installed the IVI Compliance Package. You can get the IVI Compliance Package self-extracting archive from [ni.com/downloads](http://www.ni.com/downloads) by navigating through the Drivers link. (For example, you can get IVI compliance package 15.0 from: <http://www.ni.com/download/ivi-compliance-package-15.0/5415/en/>)

### SDG Series IVI Specific Driver Installation

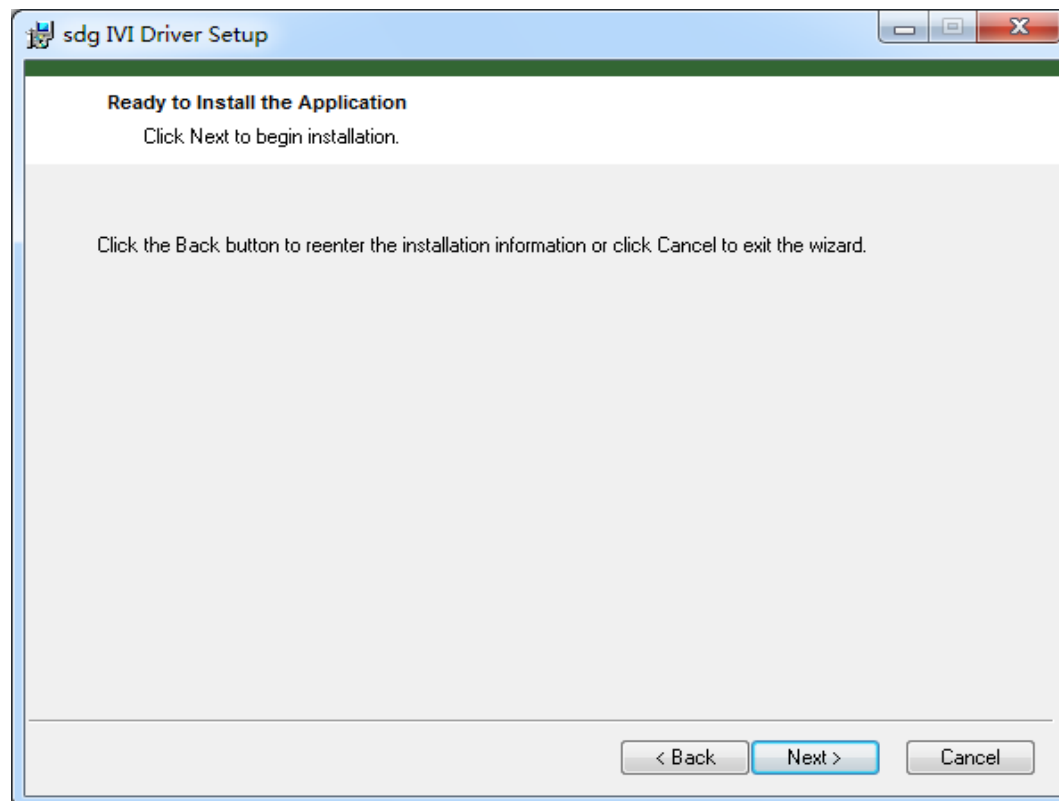
- (1) Double click the installation package sdg.msi. A dialog box will appear as shown below.



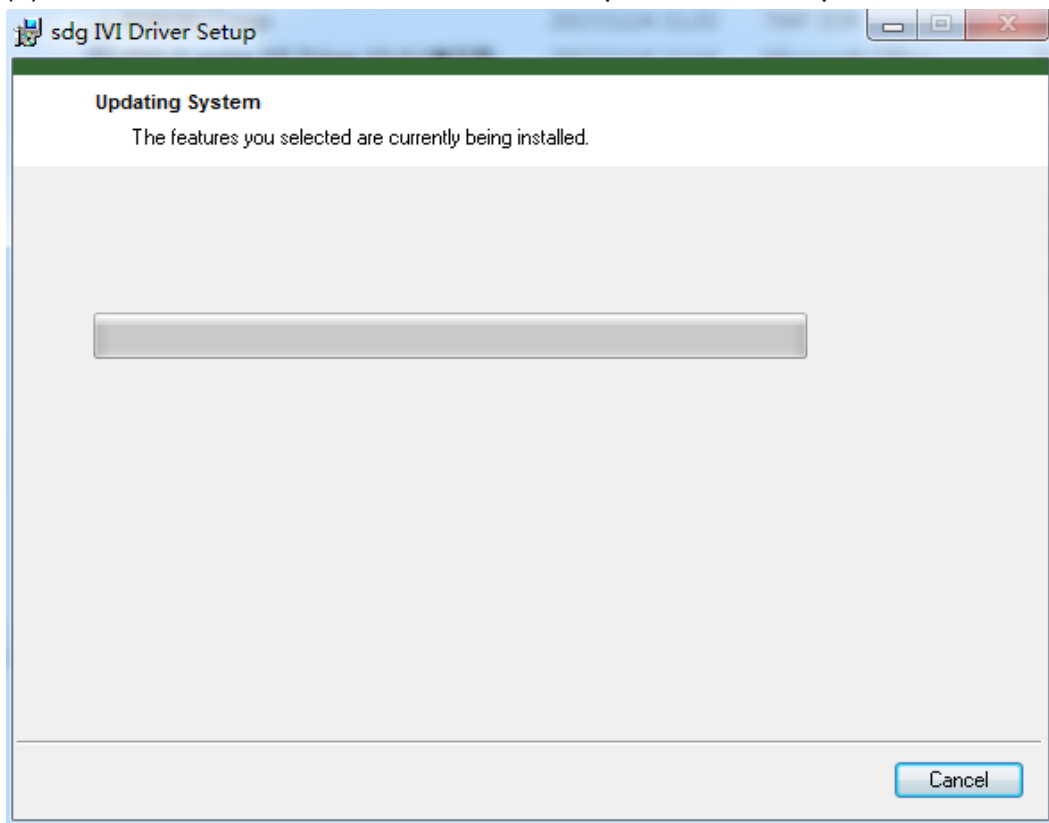
(2) Click **Next** to continue the installation:



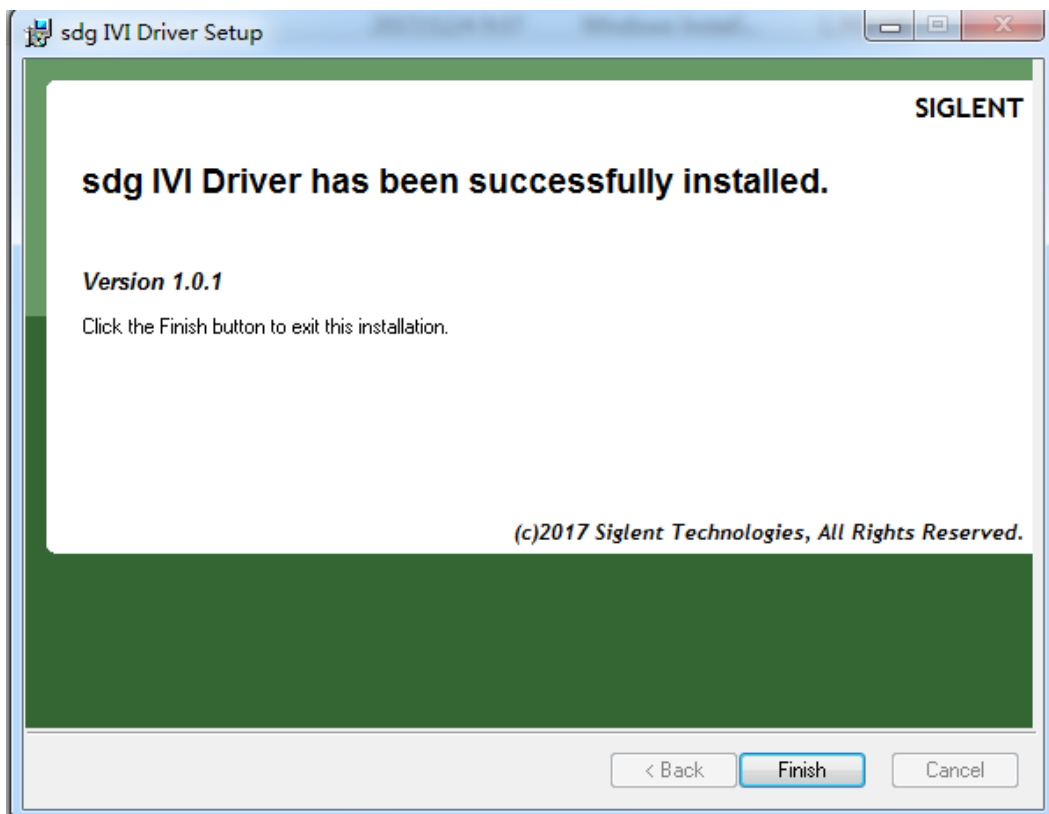
(3) Click **Next** to continue the installation:.



(4) Click **Next**, and wait for the installation process to complete.



(5) Installation completes with a message as shown:



- (6) After the installation, you will find some files located at: “C:/Program Files/IVI Foundation/IVI/” or “C:/Program Files(x86)/IVI Foundation/IVI/”. The dynamic link library is located in ./Bin, the header file is located in ./Include, the library is located in ./Lib/msc and other files are located in ./Drivers.

Note: We suggest using the dynamic link library. Please make sure you are using the correct path name.